

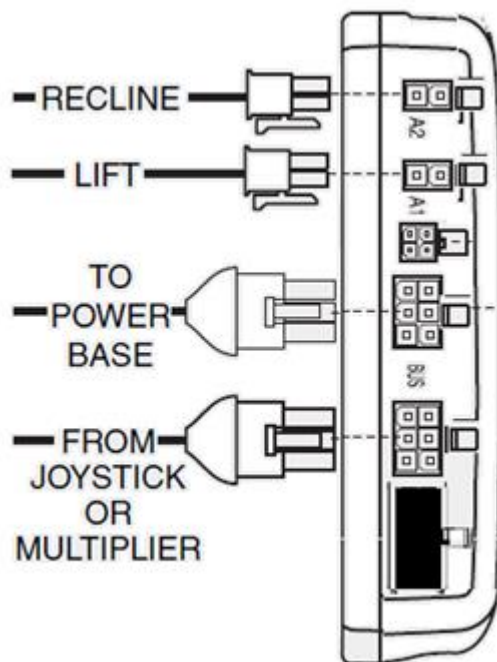
Q Logic 2 Manual Updating Modules



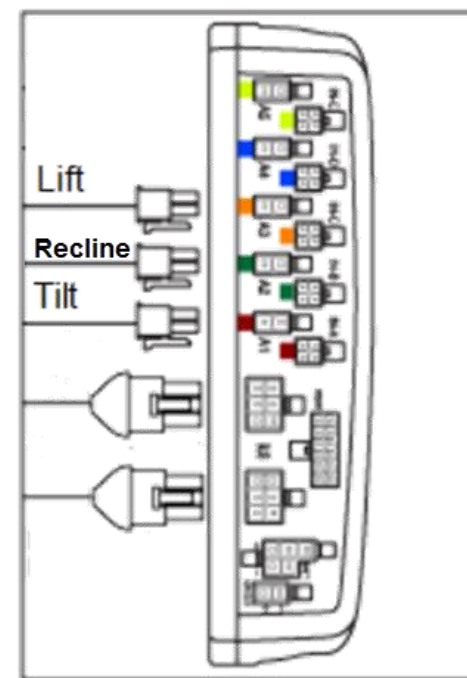
QUANTUM[®]
#1 FOR REHAB POWER

Replacing AM2 with AAM

The AAM is installed when 3 or more power function are on unit (lift, tilt & recline).



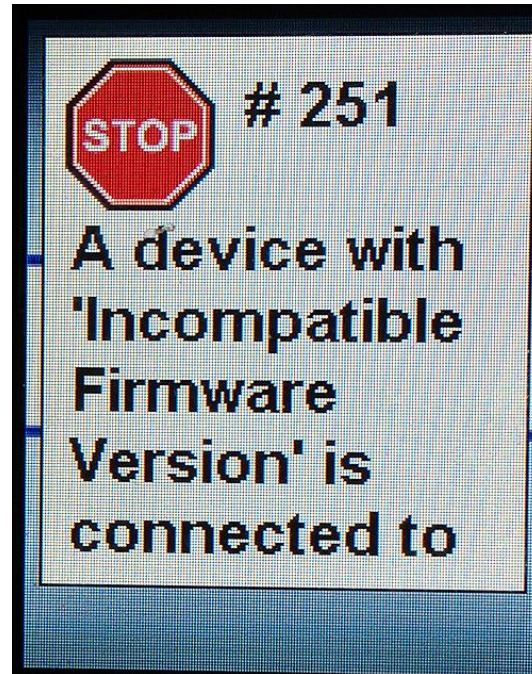
AM2



AAM

Identify the Symptom

Error #251 A device with 'Incompatible Firmware Version' is connected to the system



What do the symptoms indicate?

A #251 error indicates a module connected in the system has firmware installed which is incompatible with the other modules.

What Parts could cause symptom?

Any module connected in the Bus System.

Incompatible Firmware Version

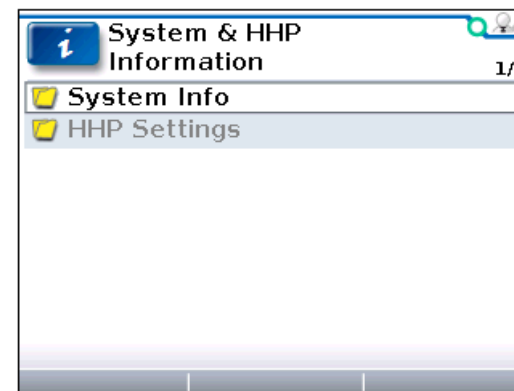
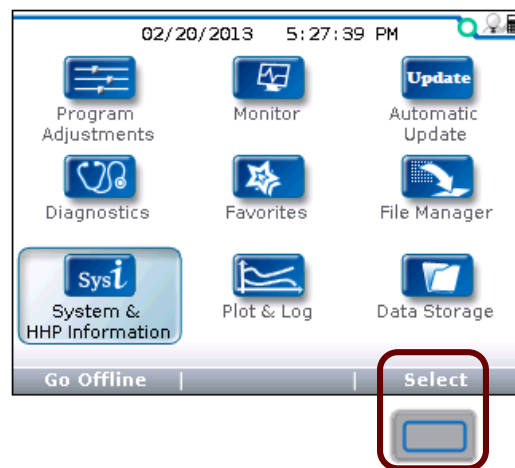
- ✚ Using the Hand Held or PC programmers to check the software versions of each component.

Update the firmware on the chair so all components match

- ✍ What do we update?
 - ✍ If the firmware for the majority of components are Pre 2012 firmware and the mismatched component is 2012 Firmware
 - ✍ Load pre 2012 firmware in mismatched component
 - ✍ **Or** update pre 2012 components to 2012 firmware
 - ✍ Making sure the patient is ok with any changes to the system that may come with new firmware (i.e. Sip N Puff gauge on screen)
 - ✍ If the firmware for majority of components is 2012 Firmware and the mismatched component is pre 2012 Firmware.
 - ✍ Update the pre 2012 component to the 2012 Firmware

Check firmware levels with HHP.

Verify needed firmware versions are installed.



Under 3.20, update is needed.

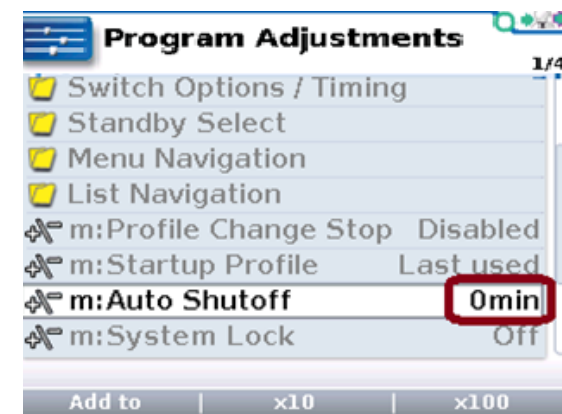
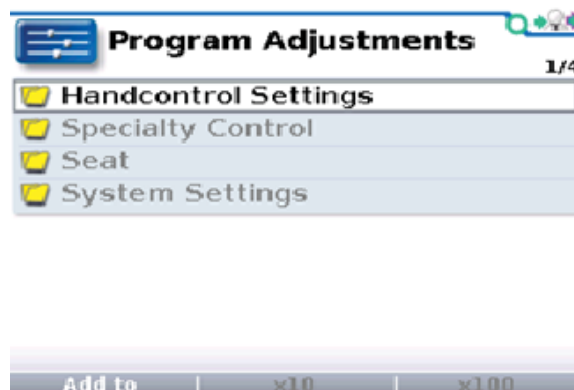
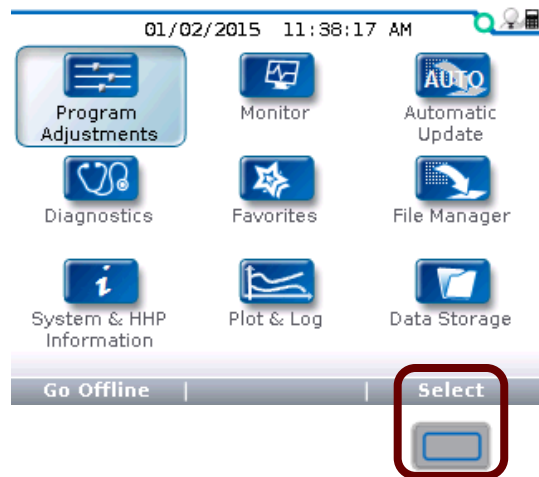
A screenshot of the 'File Manager/Firmware Update' screen. It displays a list of firmware components with checkboxes and version information. Four red arrows point to the 'Advanced Actuator M..' entry.

Component	Version
<input type="checkbox"/> Powerbase	1750-3509
SW V03.68	...
<input type="checkbox"/> Handcontrol	1751-8009
SW V04.60	...
<input type="checkbox"/> Advanced Actuator M..	1754-6009
SW V01.45	...
<input type="checkbox"/> Enhanced Display	1753-8309
SW V01.10	...

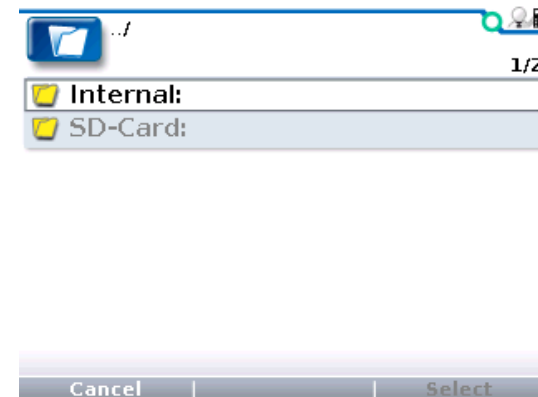
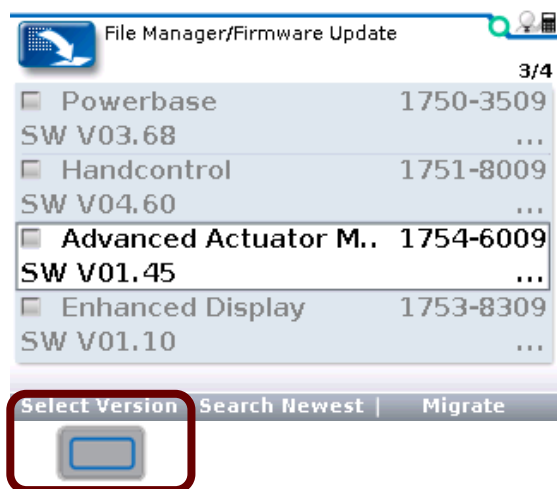
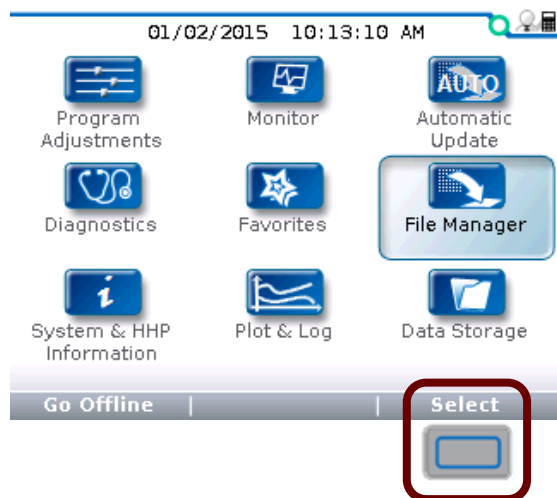
At the bottom, there are buttons for 'Select Version', 'Search Newest', and 'Migrate'.

Manually Updating Modules

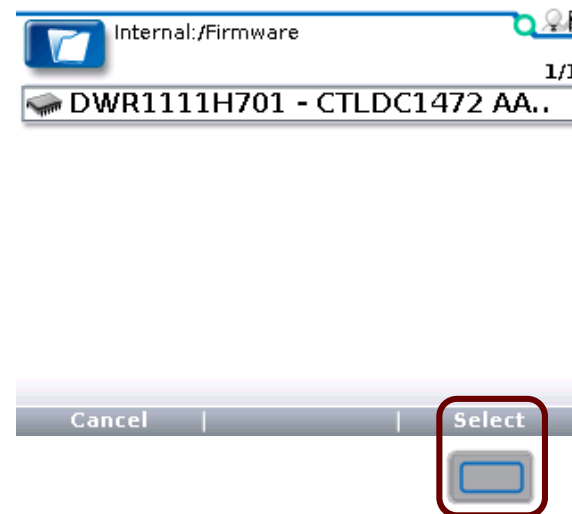
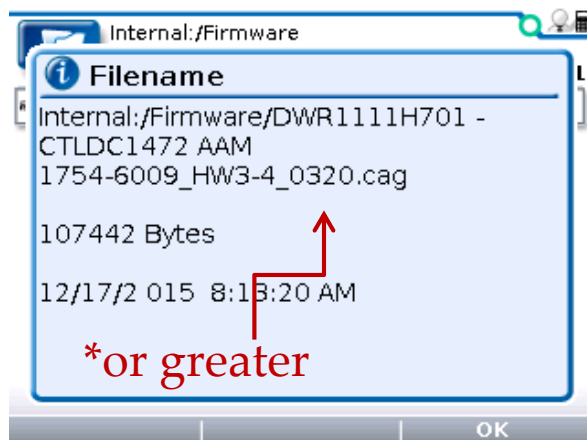
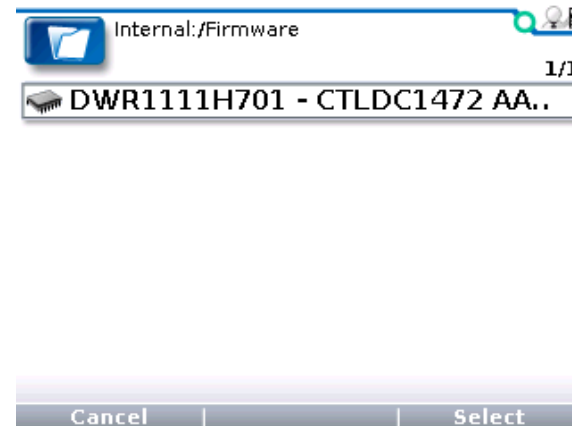
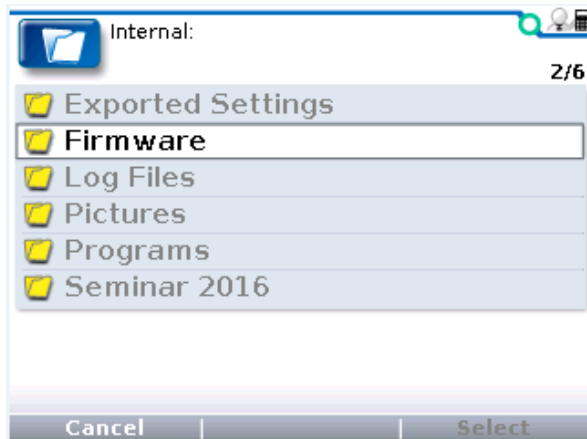
First Verify Auto Shutoff has been turned off!



Manually Updating Modules



Manually Updating Modules



Manually Updating Modules

The image displays three sequential screenshots of the 'File Manager/Firmware Update' application interface, illustrating the manual update process for modules.

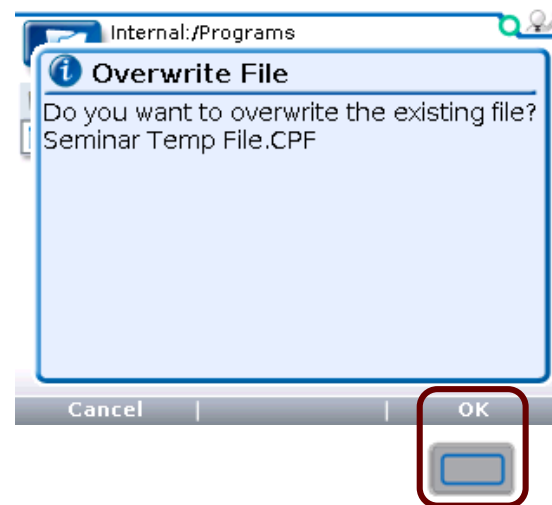
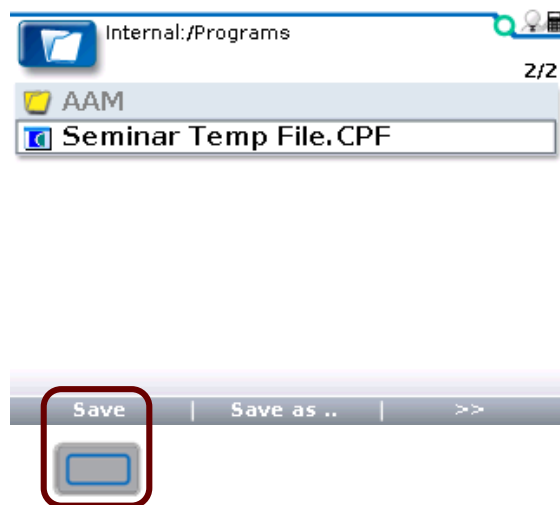
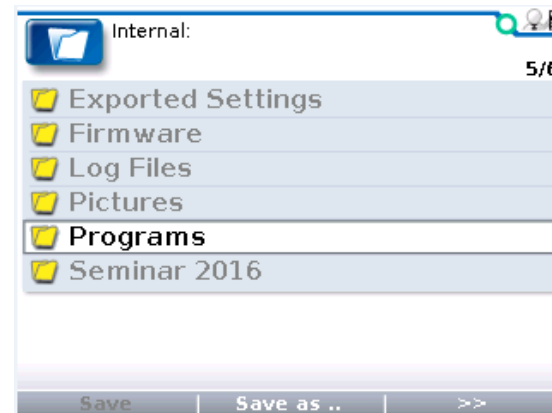
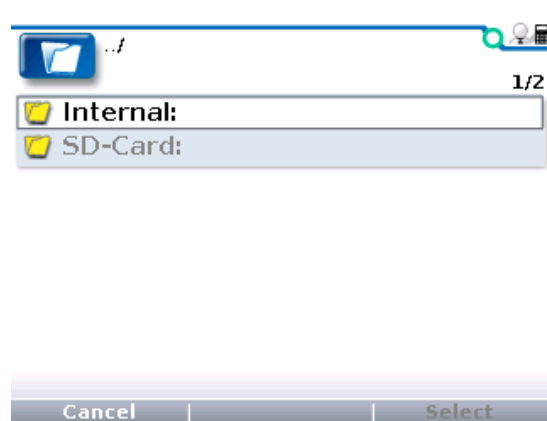
Top Screenshot: Shows a list of modules with their respective part numbers and software versions. The 'Advanced Actuator M..' module is selected. The 'Migrate' button is highlighted with a red box.

Module	Part Number	Software Version
<input type="checkbox"/> Powerbase	1750-3509	SW V03.68
<input type="checkbox"/> Handcontrol	1751-8009	SW V04.60
<input checked="" type="checkbox"/> Advanced Actuator M..	1754-6009	SW V01.45 SW V03.20
<input type="checkbox"/> Enhanced Display	1753-8309	SW V01.10

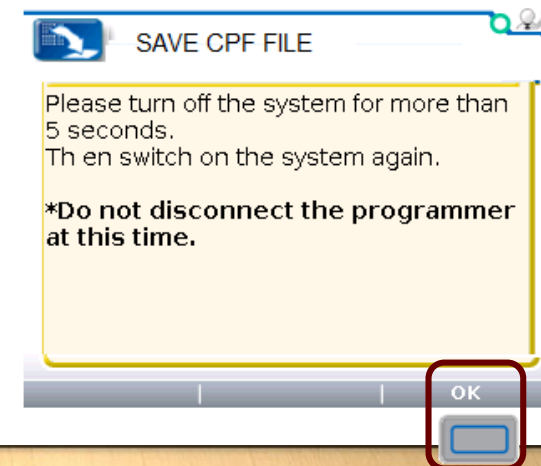
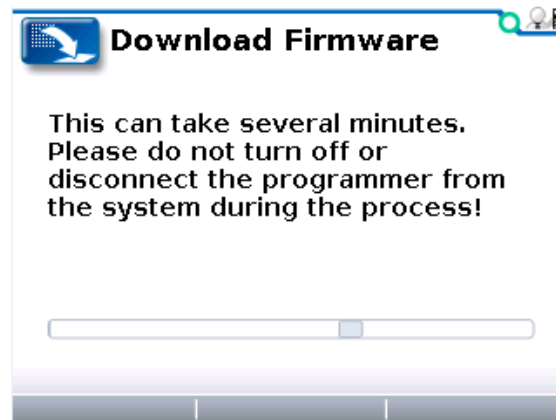
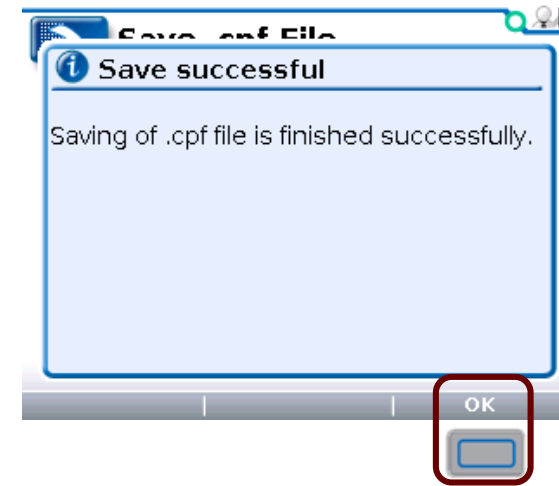
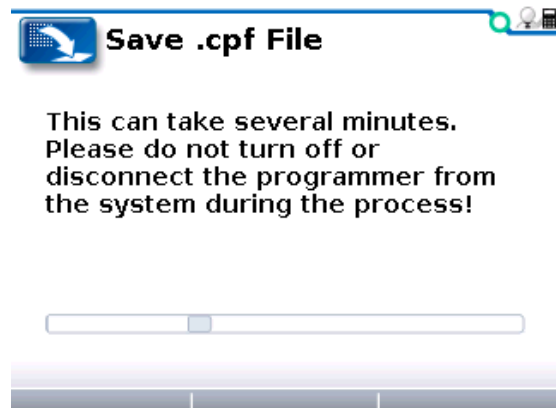
Bottom Left Screenshot: Shows the 'Migrate modules' dialog box. It provides instructions for the successful sequence: backup, download, and restore. The 'Advanced Actuator Module' is listed as the selected module. The 'OK' button is highlighted with a red box.

Bottom Right Screenshot: Shows the 'Save .cpf file first' dialog box. It instructs the user to save the settings of the selected modules to a .cpf file. The list of modules includes Powerbase, Handcontrol, Advanced Actuator Module, and Enhanced Display. The 'OK' button is highlighted with a red box.

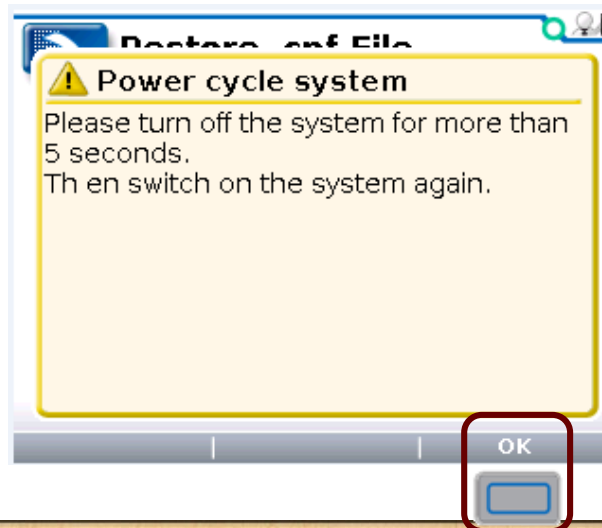
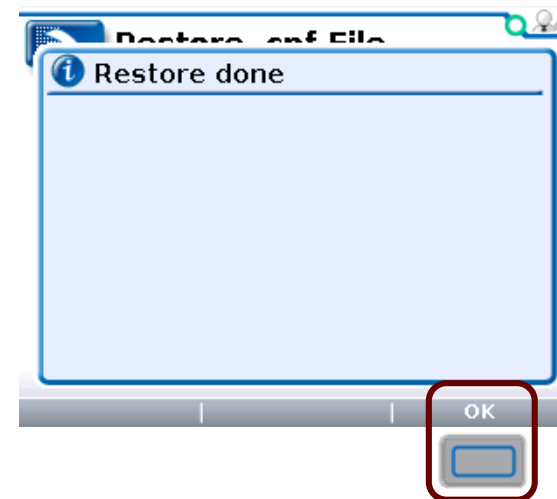
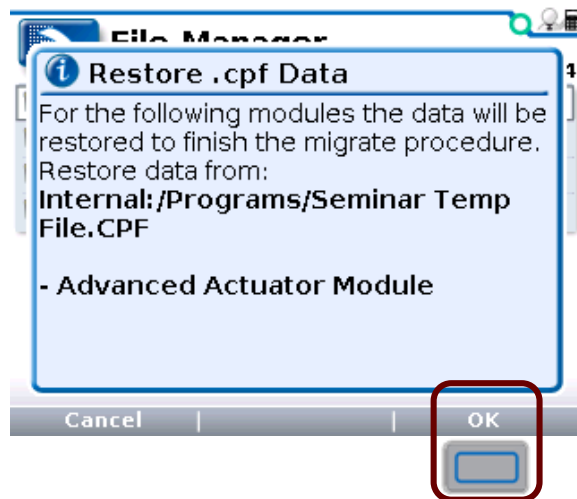
Manually Updating Modules



Manually Updating Modules

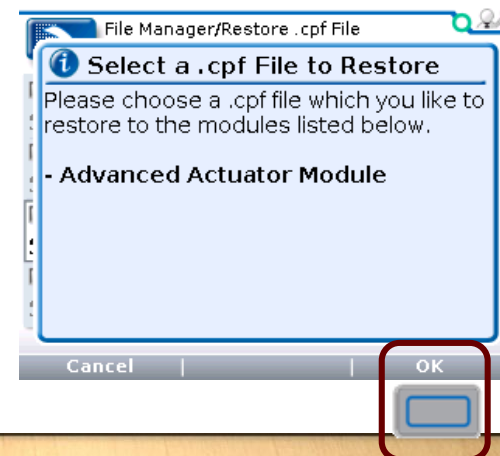
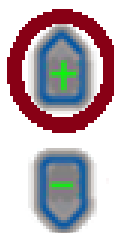
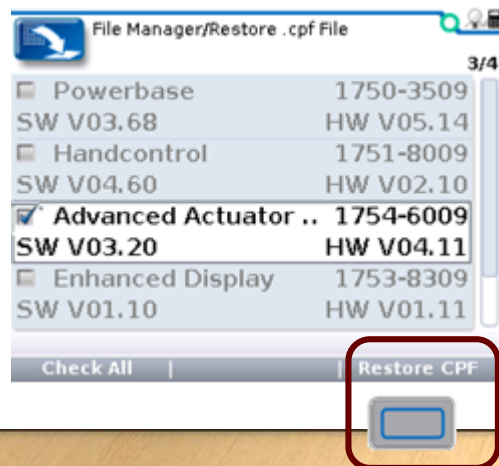
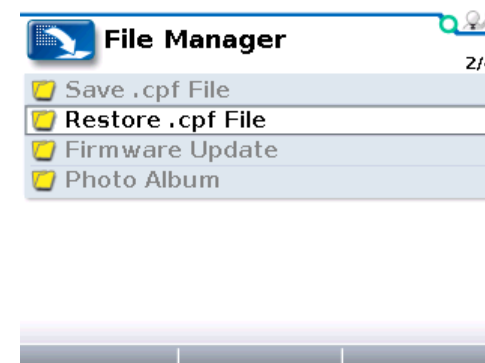
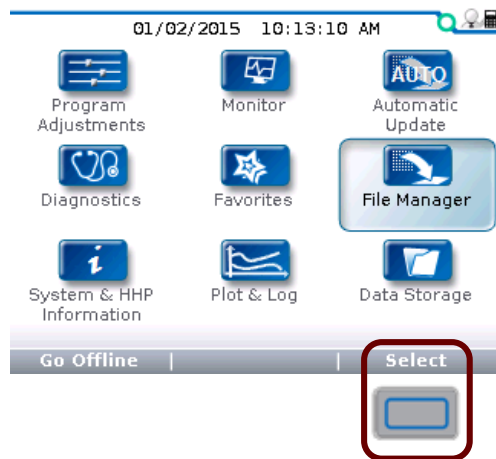


Manually Updating Modules

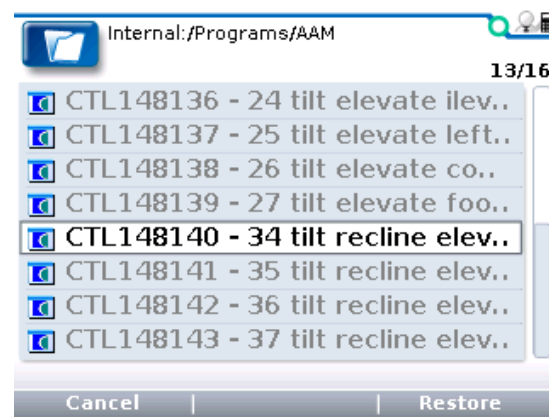
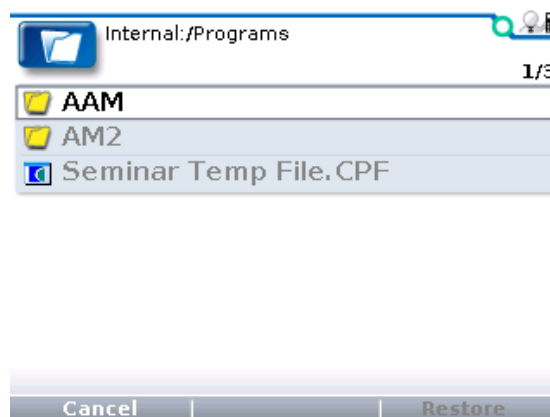
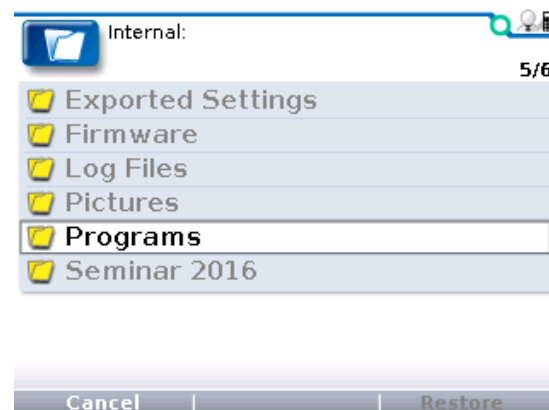
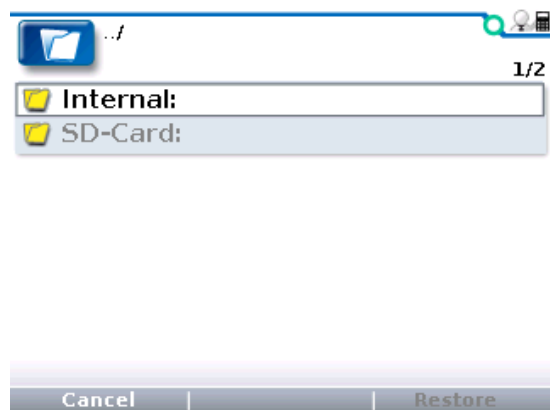


Manually Updating Modules

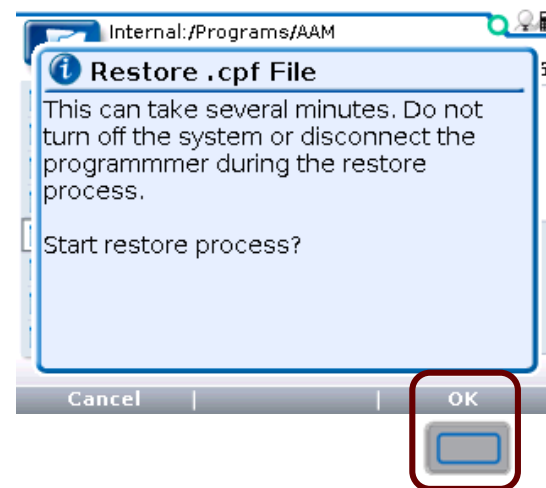
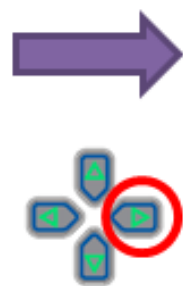
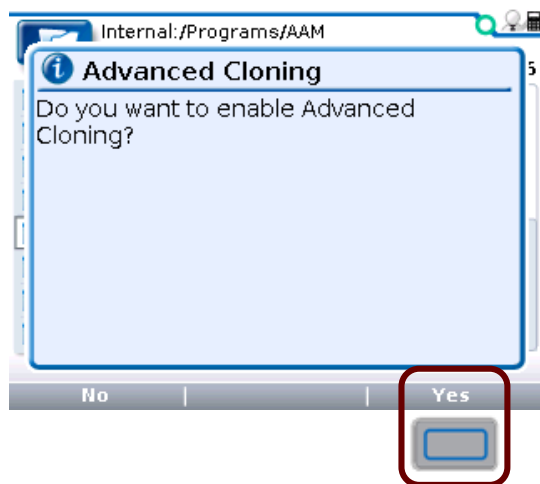
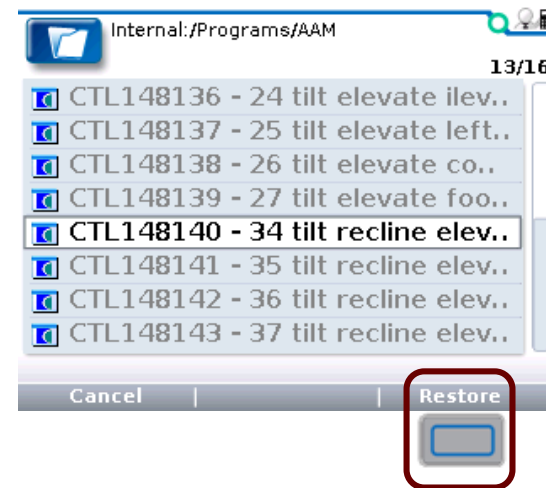
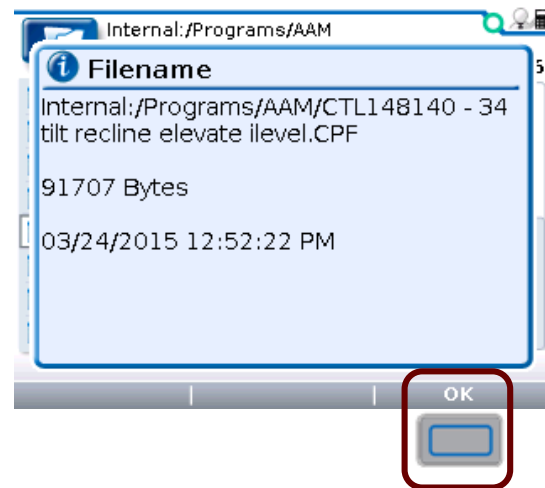
iLevel Program(CPF) file must be installed



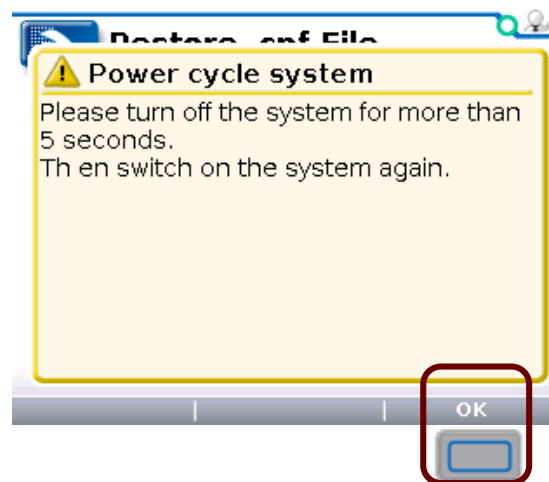
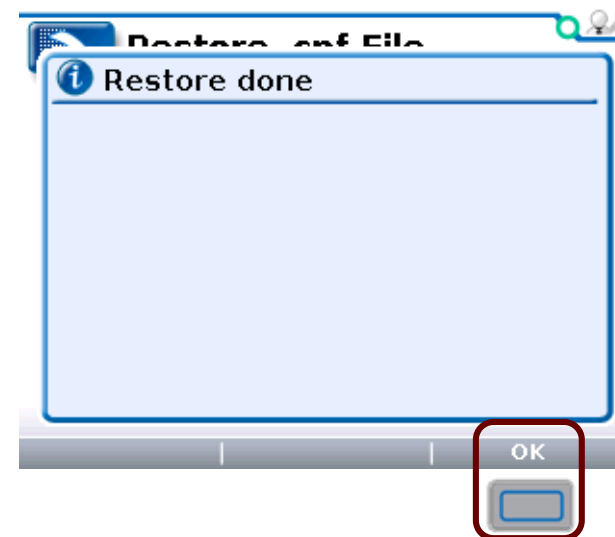
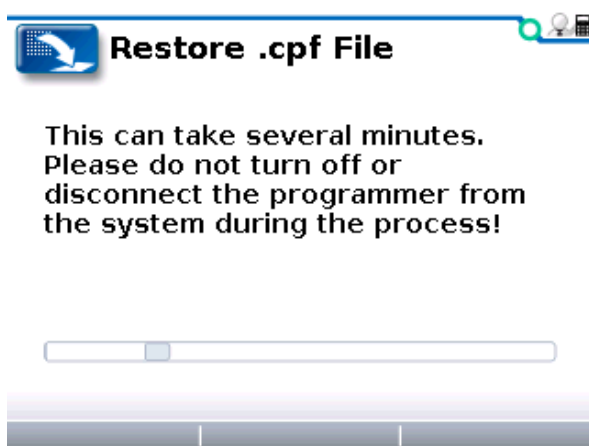
Manually Updating Modules



Manually Updating Modules



Manually Updating Modules





QUANTUM®

#1 FOR REHAB POWER

Thank you for your time

Quantum Rehab
Clinical Education Department
education@pridemobility.com